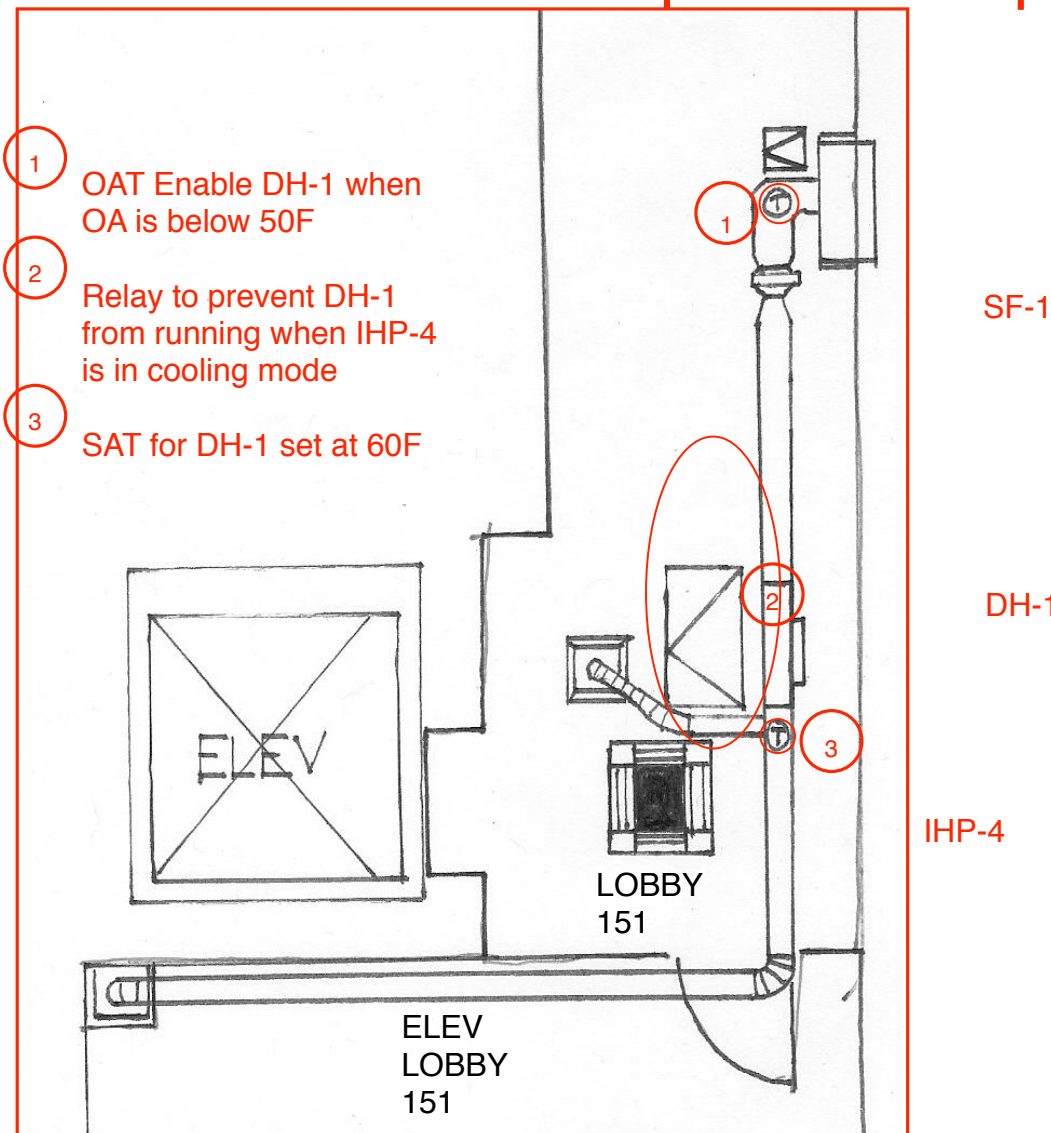


Elevator Lobby L1 South HVAC Schematic & Sequence of Operation



Description of operations

1. SF-1 runs 24/7/365 to provide outdoor air to elevator lobbies on P2 through Level 1.
2. When outdoor temp sensor is below 50F (thermostat accessible from small access hatch midway down the corridor), the duct heater DH-1 is enabled to run.
3. There is a relay installed on the duct heater controls which opens a contactor if HP-4 goes into cooling mode (*). This relay will disable the duct heater DH-1 until HP-4 cooling mode ends.
4. There is a supply temperature sensor downstream of duct heater DH-1, which can be set from the large access hatch in the ceiling. The design is for this to be set at 60F.

(*) The design engineers description of the HP-4 interlock is, "the interlock is most easily achieved with a CN-52 plug at the Mitsubishi equipment that opens a set of contacts on a cooling call, which removes 24v power from the duct heater terminal strip." Also, the commissioning test verified that the installed relay need to be wired for in the normally closed position.